



**MIAMI SAILING WEEK**  
PRESENTED BY EFG BANK



Coral Reef Yacht Club  
2484 South Bayshore Drive  
Miami, Florida  
March 6-12, 2011

## STAR CLASS SAILING INSTRUCTIONS

### 1. RULES

- 1.1 The regatta will be governed by the rules as defined in The Racing Rules of Sailing.
- 1.2 Prescriptions of US SAILING which apply are: Rules 61.4 or 76.3, Appendix F or prescriptions to rules 40, 68, 70.5(a) or 76.1. These prescriptions are attached as Appendix II. Other US SAILING prescriptions do not apply. The US Sailing prescriptions to rule 60, 63.2 and 63.4 are deleted.
- 1.3 The regatta is open to Star Class boats which are in compliance with ISCYRA 21 and 26.
- 1.4 ISCYRA 31.1.3 is changed to a combined weight of 475 pounds for skipper and crew. Skippers and crews finishing 1<sup>st</sup> through 5<sup>th</sup> overall will be weighed after the last day of racing.
- 1.5 National letters and sail numbers shall be those entered on the entry form with no substitutions allowed. Bow identification numbers will be provided by the organizing authority and placed on both sides of the bow according to instructions issued with the bow numbers. Boats will be identified by bow numbers.
- 1.6 Where there is a conflict between the notice of race and the sailing instructions the sailing instructions (SI) will govern.

### 2. NOTICES TO COMPETITORS

Notices to competitors will be posted on the official notice board located in the outside corridor behind the Coral Reef snack bar.

### 3. CHANGES TO THE SAILING INSTRUCTIONS

Any change to the sailing instructions will be posted before 0900 on the day it will take effect, except that any change to the schedule of races will be posted by 2000 on the day before it will take effect.

### 4. SIGNALS MADE ASHORE

- 4.1 Signals made ashore will be displayed on the Coral Reef Yacht Club flagpole.
- 4.2 When flag AP is displayed ashore, '1 minute' is replaced with 'not less than 90 minutes'. This changes Race Signals AP.



**MIAMI SAILING WEEK**

PRESENTED BY EFG BANK



## **5. SCHEDULE OF RACES**

5.1 Date	Day	Warning Signal
3/7	Monday	11:55
3/8	Tuesday	11:55
3/9	Wednesday	11:55
3/10	Thursday	11:55
3/11	Friday	11:55
3/12	Saturday	10:55

5.2 There will be one race per day, unless otherwise changed in accordance with SI 3.

5.3 The scheduled time of the warning signal for the first race each day is 11:55 from Monday to Friday and 10:55 on Saturday.

5.4 After a long postponement, to alert boats that a race sequence will begin soon, flag L will be displayed with one sound for at least four minutes before a warning signal. Flag L will be lowered 1 minute before the first warning signal with multiple sound signals. This changes Race Signal L.

5.5 On Saturday 3/12/11, no warning signal will be made after 1300.

5.6 There are no haul out or berthing restrictions.

## **6. CLASS FLAG**

The class flag will be a red star on a white background.

## **7. RACING AREA**

A chart of the racing area on Biscayne Bay will be attached as ADDENDUM I.

## **8. THE COURSES**

8.1 The race courses will be as described in ISCYRA 34.3, as modified by these sailing instructions and any subsequent changes to the sailing instructions.

8.2 No later than the warning signal, the race committee signal boat will display the course number with the distance and magnetic bearing to the first mark.

8.3. Courses will not be shortened. This changes rule 32.2.

8.4 The length of the legs may be changed.

## **9. MARKS**

9.1 Inflatable marks will be used for the course.

9.2 A gate may be employed at mark 3. Boats shall sail between the gate marks and round either mark.

## **10. THE START**

10.1 Races will be started by using rule 26 with the warning signal made 5 minutes before the starting signal.



**MIAMI SAILING WEEK**  
PRESENTED BY EFG BANK



10.2 The starting line will be between a staff displaying an orange flag on the starboard end signal boat and a staff displaying an orange flag on the port end pin boat.

10.3 If a midline boat is present, the starting line will be from the staff with an orange flag on the starboard end signal boat, to the staff with an orange flag on the midline boat, to the staff with an orange flag on the port end pin boat.

10.4 A boat starting later than 10 minutes after her starting signal will be scored Did Not Start without a hearing. This changes rules A4.2 and A5.

10.5 Rule 29.1 Individual Recall is changed. 'Four minutes' is replaced by '10 minutes'.

10.6 Rule 30.1 I Flag Rule shall not be employed.

10.7 Rule 30.2 Z Flag Rule add, "If a general recall is signaled or the race is abandoned after the starting signal, the race committee will display the sail number(s) of boats breaking this rule and receiving a scoring penalty before the warning signal of the next race".

10.8 Rule 30.3 Black Flag Rule add, "As a courtesy only, the race committee will attempt to display between mark 1 and mark 2 the bow number(s) of yachts breaking this rule".

## **11. CHANGE OF THE NEXT LEG OF THE COURSE**

To change the next leg of the course, the race committee will move the original mark or the finishing line to a new position, and the course will be reconfigured.

## **12. THE FINISH**

The finishing line will be between a staff displaying an orange flag on a starboard end race committee boat and a staff displaying an orange flag on a port end race committee boat.

## **13. PENALTY SYSTEM**

13.1 Boats failing to meet the time limits of SI 14.2 and 14.3 will be scored Did Not Finish Time Limit Expired (DNF TLE).

13.2 The score for DNF TLE will be one more point than the number of boats finishing within the time limit. This changes rule A4.2.

## **14. TIME LIMITS AND TARGET TIMES**

14.1 If no boat has passed Mark 1 within 45 minutes the race will be abandoned.

14.2 Boats failing to finish within 3 hours from the starting signal will be scored DNF TLE without a hearing. This changes rules 35, A4.2 and A5.

14.3 Boats failing to finish within 30 minutes after the first boat sails the course and finishes will be scored DNF TLE without a hearing. This changes rules 35, A4.2 and A5.

## **15. INTERNATIONAL JURY**

An international jury will be constituted in compliance with Appendix N, rules 70.5 and 91(b).



MIAMI SAILING WEEK

PRESENTED BY EFG BANK



## **16. PROTESTS AND REQUESTS FOR REDRESS**

16.1 The time limit for requesting a hearing or requesting redress is one hour after the signal boat docks. The signal boat will post the docking time, finish results, and actions of the race committee including race committee protests as soon as practical after docking.

16.2 Protest forms will be available at the jury desk inside the main lobby at Coral Reef Yacht Club. The protest schedule board will be situated at the jury desk in the main lobby.

## **17. SCORING**

17.1 The Low Point scoring system shall be employed.

17.2 Six races are scheduled. Three completed races are required to constitute a series.

17.3 When three or more races have been completed, a boats series score will be the total of her race scores excluding her worst race.

17.4 Penalties for violations of the Notice of race, Sailing Instructions and the Racing Rules of Sailing which are not a Part 2 or Part 3 infringement are at the discretion of the Protest Committee and may include disqualification.

## **18. PRIZES**

Prizes will be given as follows:

18.1. Daily prizes for the first, second and third place boats in the series,

18.2. A prize for the first place boat in the series for the Masters Division (skippers age 50 through 59 before the start of the first race),

18.3. A prize for the first place boat in the series for the Grand Masters Division (skippers age 60 and above before the start of the first race),

18.4. Competitors in the Master's Division and Grand Master's Division will also compete for series prizes,

18.5. Prizes for the first, second, third, fourth and fifth place boats in the series, and

18.6. The perpetual Bacardi Cup for the first place skipper and the Tito Cup for the first place crew in the series.

## **19. CHECK IN, SAFETY REGULATIONS, RETIRING**

19.1 Boats will sail by the signal boat transom on starboard tack for check in before the warning signal, until acknowledged by the race committee.

19.2 Boats in need of assistance from the race committee will wave an extended arm in the direction of any race committee vessel.

19.3 Boats retiring from racing will notify a race committee boat or if not practical inform the front desk at Coral Reef Yacht Club.

## **20. SUPPORT AND COACH BOATS**

Team leaders, coaches and other support personnel shall stay outside areas where boats are racing from the time of the preparatory signal to start until all boats have finished or



retired or the race committee signals a postponement, general recall or abandonment. Interference or producing a race disturbing wake may result in expulsion from CRYC and the US Sailing Center.

## **21. REPLACEMENT OF CREW OR EQUIPMENT**

Substitution of competitors will not be allowed without prior written approval of the jury. Once a crew member has changed, the original crew may not return. There will be no crew exchange on the final day of racing.

## **22. TRASH DISPOSAL, CLOTHING AND EXTRA SAILS**

22.1 Boats shall not put trash in the water. Trash may be placed aboard support and race committee boats.

22.2 The race committee will not accept items of clothing or sails.

## **23. RADIO COMMUNICATION**

Except in an emergency, a boat shall neither make radio transmissions while racing nor receive radio communications. This restriction also applies to mobile telephones and similar devices.

WILLIAM M. SMOAK, MD  
PRO  
February 23, 2011

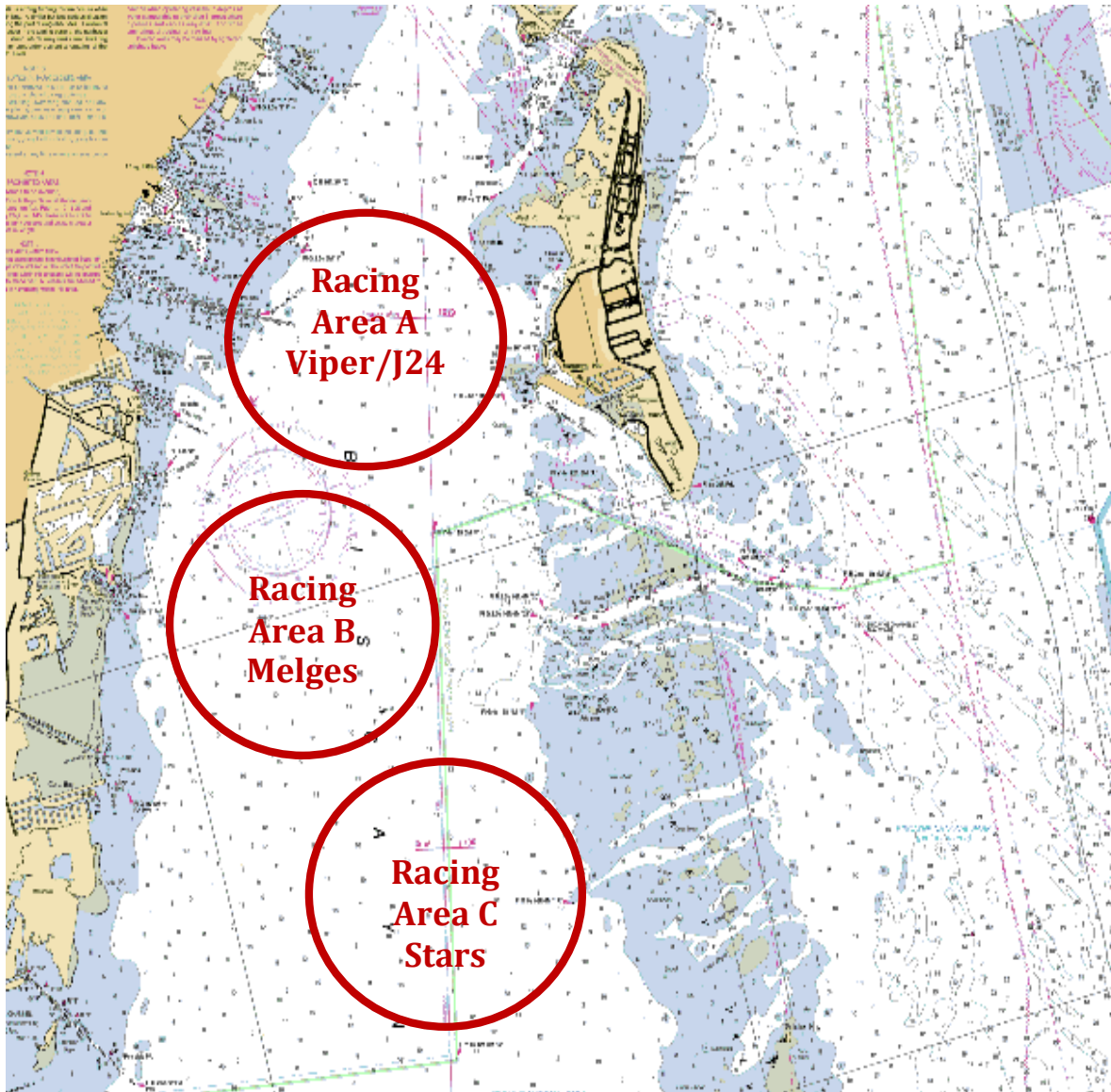


**MIAMI SAILING WEEK**

PRESENTED BY EFG BANK



## APPENDIX I





MIAMI SAILING WEEK

PRESENTED BY EFG BANK



## **STAR CLASS SAILING INSTRUCTIONS APPENDIX II**

### **US SAILING PRESCRIPTIONS**

1. Rule 61.4 --- US SAILING prescribes that no fees shall be charged for protests or requests for redress.
2. Rule 68 – US SAILING prescribes that:
  - a. A boat that retires from a race or accepts a penalty does not, by that action alone, admit liability for damages.
  - b. A protest committee shall find facts and make decisions only in compliance with the rules. No protest committee or US SAILING appeal authority shall adjudicate any claim for damages. Such a claim is subject to the jurisdiction of the courts.
  - c. A basic purpose of the rules is to prevent contact between boats. By participating in an event governed by the rules, a boat agrees that responsibility for damages arising from any breach of the rules shall be based on fault as determined by application of the rules, and that she shall not be governed by the legal doctrine of ‘assumption of risk’ for monetary damages resulting from contact with other boats.
3. Rule 76.1 – US SAILING prescribes that an organizing authority or race committee shall not reject or cancel the entry of a boat or exclude a competitor eligible under the notice of race and sailing instructions for an arbitrary or capricious reason or for reason of race, color, religion, national origin, gender, sexual orientation, or age.
4. Rule 88.2 – US SAILING prescribes that sailing instructions shall not change or delete rules 61.4 or 76.3, Appendix F, or its prescriptions to rules 40, 68 or 76.1. However, for an international event the prescription to rule 40 may be deleted.
5. Rule 76.3 – US SAILING prescribes that a boat whose entry is rejected or cancelled or a competitor who is excluded from a race or series shall be, upon written request, entitled to a hearing conducted by the protest committee under rules 63.2, 63.3, 63.4 and 63.6.



# **SAILING INSTRUCTIONS for Melges 24's and Audi Melges 20's**

**March 10-12, 2011**

## **1. RULES**

- 1.1 The 2011 Bacardi Miami Sailing Week and the Melges 20 Miami Winter Series No. 3 will be governed by the *rules* as defined in the current Racing Rules of Sailing for 2009-2012 (*RRS*).
- 1.2 All competing boats shall carry a hand held VHF radio capable of transmitting and receiving VHF channels (US) for safety purposes and Race Committee communication only. The Race Committee's VHF channel will be provided at the Skipper's Meeting and posted on the Official Notice Board.
- 1.3 A boat shall neither make nor receive radio transmissions (except from the specified Race Committee VHF channel) (including cellular telephone) while racing (*RRS* 41).
- 1.4 If there is a conflict between a rule in the NOR and these Sailing Instructions, the Sailing Instructions will take precedence. (This changes *RRS* 63.7.)
- 1.5 Boats shall not put trash in the water.

## **2. NOTICES TO COMPETITORS**

- 2.1 Notices to competitors will be posted on the official notice board located on the first floor of the Coconut Grove Sailing Club (CGSC).
- 2.2 Competitors should monitor the Race Committee VHF radio channel at 0830 and again at 0900 each race day for any Race Committee announcements.

## **3. CHANGES TO SAILING INSTRUCTIONS**





PRESENTED BY EFG BANK

3.1 Written changes will be posted by 0830 on the day they will take effect, except that any changes in the Schedule of Races will be posted by the latest protest time limit on the day before they take effect (Sailing Instruction 16.2).

3.2 Oral changes to the Sailing Instructions may be given on the water. The Race Committee Signal Boat shall display Code Flag "L" and announce the change on the Race Committee VHF Channel in accordance with rule 90.2(c). Competitors may also approach the Committee Boat and verbally receive the change while Code Flag "L" is displayed.

#### **4. SIGNALS MADE ASHORE**

4.1 Signals made ashore will be displayed from the main flagpole at the Coconut Grove Sailing Club.

4.2 Code Flag "L", when displayed ashore signifies that a change in Sailing Instructions or other notice to competitors has been posted on the Official Bulletin Board.

4.3 Code Flag "AP" when displayed ashore means that the start has been postponed. The Warning Signal will be made not less than 60 minutes after the lowering of this signal.

4.4 Code Flag "N" over "A" and 3 sounds when signaled ashore means that all racing is abandoned for today.

#### **5. SCHEDULE OF RACES**

5.1 March 10, 11 & 12, 2011 - Up to 8 races are scheduled

5.2 The Skipper's Meeting will be at Coconut Grove Sailing Club at 1730 on Wednesday, March 9<sup>th</sup>.

5.3 The scheduled time for the Warning Signal for the first race each day is 1100 hours.

5.4 The starting order shall be Melges 24's followed by the Melges 20 class.

5.5 The maximum number of races that may be sailed on any given day is four. The Race Committee Finishing Boat will signal its intent to start another race that day by displaying Code Flag "R" at the finish of a race. Code Flag "R" will be lowered with one sound one minute before the next Warning Signal is made.

5.6 On the final day of the regatta, the Initial Warning Signal for the final race will not be made after 1400 hours. The Warning Signal for a start following one or more General Recalls may be after 1400.

#### **6. CLASS FLAG**

6.1 The class flags will be the Melges 24 Insignia on a white flag and the Audi Melges 20 Insignia on a white flag.

#### **7. RACING AREAS**

7.1 All racing will be on Biscayne Bay in an area approximately 1 to 3 miles SSE of Brennan Channel Marker "1" (Fl.G 5sec 8ft).



**MIAMI SAILING WEEK**

PRESENTED BY EFG BANK

## **8. THE COURSES**

8.1 Courses will be as described below and in "ADDENDUM #1- COURSE ILLUSTRATIONS".

8.2 Course Designations:

**COURSE # 4** - Start - W - OS - Leeward Gate - W - OS - Finish

**COURSE # 5** - Start - W - OS - Leeward Gate - W - OS - Leeward Gate - Finish

8.3 The Windward Mark (W) and the accompanying offset mark (OS) shall be left to port.

8.4 Courses will be posted on a Race Committee Signal Boat course board prior to the Warning Signal of each race. The number of the course to be sailed, the approximate magnetic compass bearing, and distance from the starting line to the first mark will be displayed (This changes RRS 27.1).

## **9. MARKS**

9.1 The Windward Mark (W) and the Leeward Gate will be red inflatable marks.

9.2 The windward offset mark (OS) will be a 3 ft. round inflatable mark. The offset mark will be laid to port of the Windward Mark, approximately 100 feet away.

9.3 A Leeward Gate will be used. The gate will be located to windward of the Starting Line. Boats shall sail between the gate marks from the direction of the previous mark and round either gate mark.

9.4 If one of the leeward gate marks is missing, boats shall round the one existing leeward mark to port.

## **10. THE START**

10.1 Races will be started in accordance with RRS 26.

10.2 The starting line will be between a staff displaying an orange flag on the Race Committee Signal Boat and a staff displaying an orange flag on a port end Line Boat or a yellow inflatable mark.

10.3 The Race Committee Signal Boat may deploy a "keep away" buoy which shall rank as a starting mark. Any boat touching this buoy will have broken rule 31 and shall act in accordance with RRS 44.1. Boats shall not pass between this buoy and the Signal Boat when approaching the line to start. The area between the limit mark and the Signal Boat does not rank as an obstruction for the purposes of RRS 18, 19 and 20.

10.4 A boat starting later than ten (10) minutes after her starting signal will be scored Did Not Start (DNS). (This changes RRS A4.1)

## **11. RECALLS**

11.1 In the event of an individual recall, the sail numbers, bow numbers or identification of any boat or boats that are identified as OCS may be announced on the Race Committee VHF channel. Failure of a boat to see or hear her recall notification, and the timing and order of such hails, or the length of time it takes to make a notification



PRESENTED BY EFG BANK

on the Race Committee VHF channel will not be grounds for redress. (This changes RRS 29.1 and 62.1 (a).)

- 11.2 The Race Committee may hail (verbally or via the Race Committee VHF Channel) the bow numbers or sail numbers of boats that are over the line in the last one (1) minute of the starting sequence after the I and / or Z Flag has been lowered. Failure of a boat to hear her recall notification, and the timing and order of such hails will not be grounds for redress. (This changes RRS 29.1 and 62.1 (a).)

## **12. CHANGING THE NEXT LEG OF THE COURSE**

- 12.1 If the change is for a windward leg, the new mark will be a yellow inflatable tetrahedron, unless the change is for the final leg of Course 5, which in that case, the finish line will be in the new position.
- 12.2 If the change is for a leeward leg, the gate marks will be moved into the new position, unless the change is for the final leg of Course 4, which in that case, the finish line will be in the new position. In this event, there may be a different Race Committee boat acting as the finishing boat.
- 12.3 The Race Committee will attempt to broadcast any course changes over the Race Committee VHF channel.

## **13. FINISH**

- 13.1 The Finish line for **Leeward finishes** (Course 4) will be on the opposite side of the Race Committee Boat from the Starting Line. The Finish line will be between staffs displaying orange flags on Race Committee boats or between a staff displaying an orange flag on a Race Committee boat and a nearby inflatable mark.
- 13.2 The Finish line for **Windward finishes** (Courses 5) will be between staffs displaying orange flags on Race Committee boats or between a staff displaying an orange flag on a Race Committee boat and a nearby inflatable mark.

## **14. PENALTIES FOR BREAKING RULES OF PART 2**

- 14.1 The Penalty for Breaking a Rule of RRS Part 2 is changed such that if a boat breaks a rule of Part 2 her penalty will be a One-Turn Penalty including one tack and one jibe. (This changes RRS 44.1.)

## **15. TIME LIMITS**

- 15.1 Any race in which no boat rounds the first windward mark within 45 minutes, or finishes within two (2.0) hours of the start shall be abandoned. Any boats not finishing within 45 minutes of the finish time of the first boat will be scored TLE (Time Limit Expired). The TLE score for such boats shall be one point more than the number of boats that finished within 45 minutes of the first boat. (This changes RRS 35, A4.1 & A4.2.)

## **16. PROTESTS AND REQUESTS FOR REDRESS**

- 16.1 A boat intending to protest is requested to notify a Race Committee Finish Boat of its intention and the identity of the protested boat(s) as soon as possible after finishing.
- 16.2 Protest forms will be available at the Jury desk at Biscayne Bay Yacht Club (2540 S. Bayshore Dr. (just past Shake-A-Leg from CGSC). Protests and requests for redress



PRESENTED BY EFG BANK

shall be delivered to the Jury desk within the protest time limit. The time limit is one (1) hour after the Race Committee Finish Boat docks. Protest hearings will be conducted at Biscayne Bay Yacht Club as soon as possible and in the approximate order in which they were filed.

- 16.3 It is each boat's sole responsibility to check the Jury notice board at the end of the protest filing time to see if she is cited in a protest. Should any party fail to appear when called for a hearing, the Jury may proceed in accordance with *RRS* 63.3(b). Representatives of boats who are parties to hearings and their witnesses shall remain on call in the vicinity of the Jury desk until excused by the Jury.
- 16.4 Video and photos taken from any support and/or coach boat shall not be used as evidence at protest hearings. This alters *RRS* 63.6.
- 16.5 For protests involving Melges 20's, the representative from each yacht who attends the hearing shall be the owner or the Category 1 helmsman. Category 3 sailors are not allowed in the hearing, or to be in contact with the representatives at the hearing.

## **17. SCORING**

- 17.1 The Low Point Scoring System, as provided in *RRS* Appendix "A" shall apply, except as changed in this Section of these Sailing Instructions as follows.
- 17.2 Up to Eight (8) races are scheduled, of which one (1) must be completed to constitute a regatta. When fewer than six races have been completed, a boat's series score will be the total of her race scores. When six or more races have been completed, a boat's series score will be the total of her race scores excluding her worst score.

## **18. BOAT IDENTIFICATION**

- 18.1 For Melges 24's, bow numbers will be provided to all registrants and shall be displayed on both sides of the bow. The leading edge of each bow number shall be no farther back than 10 inches aft of the bow. Boats failing to properly display bow numbers may be subject to protest by the Race Committee only.
- 18.2 Each Melges 20 shall have clearly visible bow numbers as provided by the manufacturer. Boats failing to properly display bow numbers may be subject to protest by the Race Committee only.

## **19. TEAM AND PRIVATE SUPPORT BOATS**

- 19.1 Support and Coach boats are required to register with the Race Committee prior to each regatta at Registration. All coach and support boats shall monitor the Race Committee's VHF channel while in the sailing area so they may be contacted by the Race Committee. The Race Committee's VHF channel will be provided at the Skipper's Meeting and posted on the Official Notice Board.
- 19.2 Support and Coach Boats are required to conform to class rules concerning their activities on the water.

## **20. HAUL OUT RESTRICTION**

- 20.1 All boats must be in the water by 1700 on the day before racing begins.
- 20.2 No boats shall be hauled out during a regatta except according to the written terms and with permission of the Principal Race Officer or the Chief Judge for the event.



## **21. PRIZES**

- 21.1 The top three boats overall in each class shall receive Series trophies. In addition, daily prizes will be awarded to the top three boats.
- 21.2 For the Audi Melges 20 Miami Winter Series, the top five boats will receive prizes.

## **22. SAFETY REQUIREMENTS**

- 22.1 A boat that retires from a race or does not intend to start a scheduled race shall promptly report this to the Race Committee via hailing or calling on the Race Committee VHF channel, and receive acknowledgement. If this is not possible, she shall promptly report her actions to the CGSC office when first arriving on shore.

## **23. DISCLAIMER OF LIABILITY**

- 23.1 Competitors participate in the regatta entirely at their own risk. See *RRS 4*, Decision to Race. The Organizing Authority, Race Committee, host club, Melges Performance Sailboats, and their officers, employees and volunteers will not accept any liability for material damage or personal injury or death sustained in conjunction with or prior to, during, or after the regattas in this Series.

CGSC Regatta Chairman: Ron Rostorfer

Principal Race Officer: Bruce Golison

AM20CA Administrator: Joy Dunigan



**MIAMI SAILING WEEK**

PRESENTED BY EFG BANK

**ADDENDUM #1 - COURSE ILLUSTRATIONS**

**EXAMPLE: COURSE BOARD DISPLAYED ON R/C SIGNAL BOAT**

Course: 4  
Distance To W: 1.0  
Heading To W: 120

**COURSE # 4 (Leeward Finish)**

Start - W - OS - Leeward Gate - W - OS - Finish



Start ⌘ ----- ⌘ R/C ⌘ ----- ⌘ Finish

---

**COURSE # 5 (Windward Finish)**

Start - W - OS - Leeward Gate - W - OS - Leeward Gate - Finish

(Finish)



Start ⌘ ----- ⌘ R/C



PRESENTED BY EFG BANK



## Viper 640 and J/24 Classes

March 9 – 12, 2011

### Sailing Instructions

#### 1 RULES

- 1.1 The regatta will be governed by the rules as defined in *The Racing Rules of Sailing* (RRS).
- 1.2 The following rules are changed for Vipers:
  - 1.2.1 The Viper Notice of Race Class Addendum is changed to prohibit coaching while *racing*.
  - 1.2.2 There are no minimum or maximum crew weight limits for this regatta, but there shall be a minimum of two crew on board while racing, in addition to the skipper.
- 1.3 The following rules are changed for J/24s:
  - 1.3.1 A boat shall receive no outside assistance, except as provided for in RRS 41, after leaving her mooring or dock for the first race of each day until she returns to her mooring or dock. This changes the preamble to Part 4 of the RRS and RRS 41.
  - 1.3.2 For J/24s, RRS 42.3 (b) and (c) will be replaced by IJCA Rule 8.2.
  - 1.3.3 IJCA rule 5.3 is changed to permit a boat to sail with different crew on different days provided the crew changes are declared at registration. Crew changes not declared at registration require advance written approval of the jury and will only be approved in exceptional cases.
  - 1.3.4 If there are co-skippers, one of them shall be designated at the primary skipper for this regatta.

#### 2 NOTICES TO COMPETITORS

- 2.1 Notices to competitors will be posted on the regatta notice board located at Coral Reef Yacht Club by the locker rooms.
- 2.2 The race committee will use VHF channel 68 to communicate with competitors on the water.

#### 3 CHANGES IN SAILING INSTRUCTIONS

Any changes will be posted before 0800 on the day it will take effect, except that any change in the schedule of races will be posted before 2000 the day before the change is to take effect.

#### 4 SIGNALS MADE ASHORE

- 4.1 Signals made ashore will be displayed from the flagpole located at Biscayne Bay Yacht Club.
- 4.2 When flag AP is displayed ashore, '1 minute' is replaced by 'not less than 45 minutes' in the race signal.

#### 5 CLASS FLAG

Class flags will be a white flag with the class insignia.

#### 6 SCHEDULE

#### Wed, Mar 9

1700 Competitors meeting in Hospitality Village

#### Thu, Mar 10 – Sat, Mar 12

1055 First Warning, subsequent races to follow  
No warning after 1400 on Saturday

#### 7 THE COURSES

- 7.1 The diagrams and descriptions in Attachment II show the courses, including the approximate angles between legs and the order in which marks are to be passed.
- 7.2 If only one leeward mark is present it shall be rounded to port.
- 7.3 The course identifier, approximate magnetic bearing and distance in nautical miles to the first mark will be displayed from the race committee signal boat prior to the warning signal for each race.

An example is shown below:

5	Five legs, finishing to weather
270	Approx magnetic bearing to weather mark
1.0	1.0 nm to weather mark

#### 8 MARKS

- 8.1 The windward mark will be red with EFG logo. The leeward marks will be red with Bacardi logo. Starting and finishing marks will be yellow with West Marine logo. The offset mark will be a small orange ball.
- 8.2 New marks, as provided in SI 11, will be orange cylinders.

#### 9 THE START

The starting line will be between a staff displaying an orange flag on the race committee signal boat at the starboard end and either (a) the course side of the starting mark or (b) a staff displaying an orange flag on a boat at the port end.

#### 10 RECALLS

- 10.1 When an individual recall is signaled, the race committee will attempt to hail OCS boats on VHF Channel 68.
- 10.2 The timing and order of such hails or the failure of a boat to hear the hail shall not be grounds for redress, changing RRS 62.

#### 11 CHANGE OF THE NEXT LEG OF THE COURSE

To change the next leg, the race committee will lay a new mark (or move the finishing line) and remove the old mark as soon as practicable. When in a subsequent change a new mark is replaced, it will be replaced by an original mark.

#### 12 THE FINISH



MIAMI SAILING WEEK

PRESENTED BY EFG BANK



The finishing line will be between a staff displaying an orange flag on a race committee boat and the course side of the finishing mark.

### 13 TIME LIMITS

- 13.1 If no boat has passed Mark 1 within 45 minutes, the race will be abandoned.
- 13.2 The time limit for the first boat to sail the course and finish is 90 minutes.
- 13.3 Boats still racing more than 15 minutes after the first boat sails the course and finishes will be scored TLE (Time Limit Expired) without a hearing. This changes RRS 35, A5, and A11.

### 14 PENALTY SYSTEM FOR J/24s

- 14.1 The Scoring Penalty, RRS 44.3 will apply when a boat may have broken a rule of RRS Part 2. The One-Turn Penalty will apply when a boat may have broken RRS 31.
- 14.2 The boat accepting a scoring penalty shall conspicuously display a yellow flag (code flag "I" is acceptable), with a hoist of not less than 150 mm and a fly of not less than 200 mm. This changes RRS 44.3(a).
- 14.3 Add to RRS 64.1(d): If a boat receives a penalty when not racing, her penalty shall apply to the race designated by the protest committee.

### 15 PENALTY SYSTEM FOR VIPERs

RRS 44.1 is changed so that a Two-Turn Penalty is replaced by a One-Turn Penalty except for breaches of RRS 18.

### 16 POST RACE SCORING PENALTY AND PROTEST ARBITRATION

- 16.1 For protests involving an alleged breach of a rule of Part 2, a short arbitration hearing will be offered prior to a protest hearing. After a written protest is delivered to the protest desk, one representative from each boat will meet with the arbitrator unless the protestor requests that the protest be withdrawn. No witnesses will be allowed. Protests not resolved by arbitration will be forwarded to a protest committee. (This changes Part 5, section B.)
- 16.2 The arbitrator will not be a member of the protest committee, but will be permitted to observe the testimony from the protestor and protestee and offer testimony if called upon by the committee. This changes rule 63.3(a).
- 16.3 A boat that accepts the arbitrator's opinion that she broke a rule of Part 2 shall receive a penalty score of 40% per RRS. The acceptance of an arbitrator's opinion cannot be grounds for redress.

### 17 PROTESTS AND REQUESTS FOR REDRESS

- 17.1 Protest forms are available in the Jury Room located at Biscayne Bay Yacht Club and shall be delivered there within the protest time limit which is 60 minutes after the race committee finish boat docks after the last race of the day.

17.2 The race committee will post a list of penalties being assigned by the race committee prior to the end of protest time limit. The deadline for requesting redress based on these scores will be either 30 minutes after posting of the penalty notice or the protest time limit, whichever is later. This changes RRS 62.2.

17.3 Notices will be posted within 15 minutes of the protest time limit to inform competitors of hearings and arbitration hearings in which they are parties or named as witnesses. Hearings will be held in the Jury Room, beginning as soon as practical.

17.4 On the last day of the regatta a request for reopening a hearing shall be delivered (a) within the protest time limit if the party requesting reopening was informed of the decision on the previous day; (b) no later than 30 minutes after the party requesting reopening was informed of the decision on that day. This changes RRS 66.

### 18 SCORING

- 18.1 Twelve races are scheduled, changing the J/24 NoR Class Addendum. Three races are required to be completed to constitute a regatta.
- 18.2 Each boat's regatta score shall be the total of her race scores excluding her worst score, except that if less than five races are sailed, each boat's series score shall be the total of her race scores.
- 18.3 Boats scored TLE will be scored points equal to the number of boats finishing within the time limit plus two points, but no worse than DNF.

### 19 SAFETY

- 19.1 Prior to the warning signal for the first race of each day in which it intends to compete, each boat is requested to check in by VHF or sail by the race committee signal boat and hail its sail number.
- 19.2 A boat retiring from a race or leaving the racing area early shall promptly notify the race committee either by hail, over VHF, or by telephone to the Event Chairman at 305-915-1438.

### 20 CREW

- 20.1 No changes to crew shall be allowed except with written approval of the Protest Committee.
- 20.2 Requests for replacement of crew and any reply shall be posted on the regatta notice board.
- 20.3 The same number of persons shall sail throughout the event.

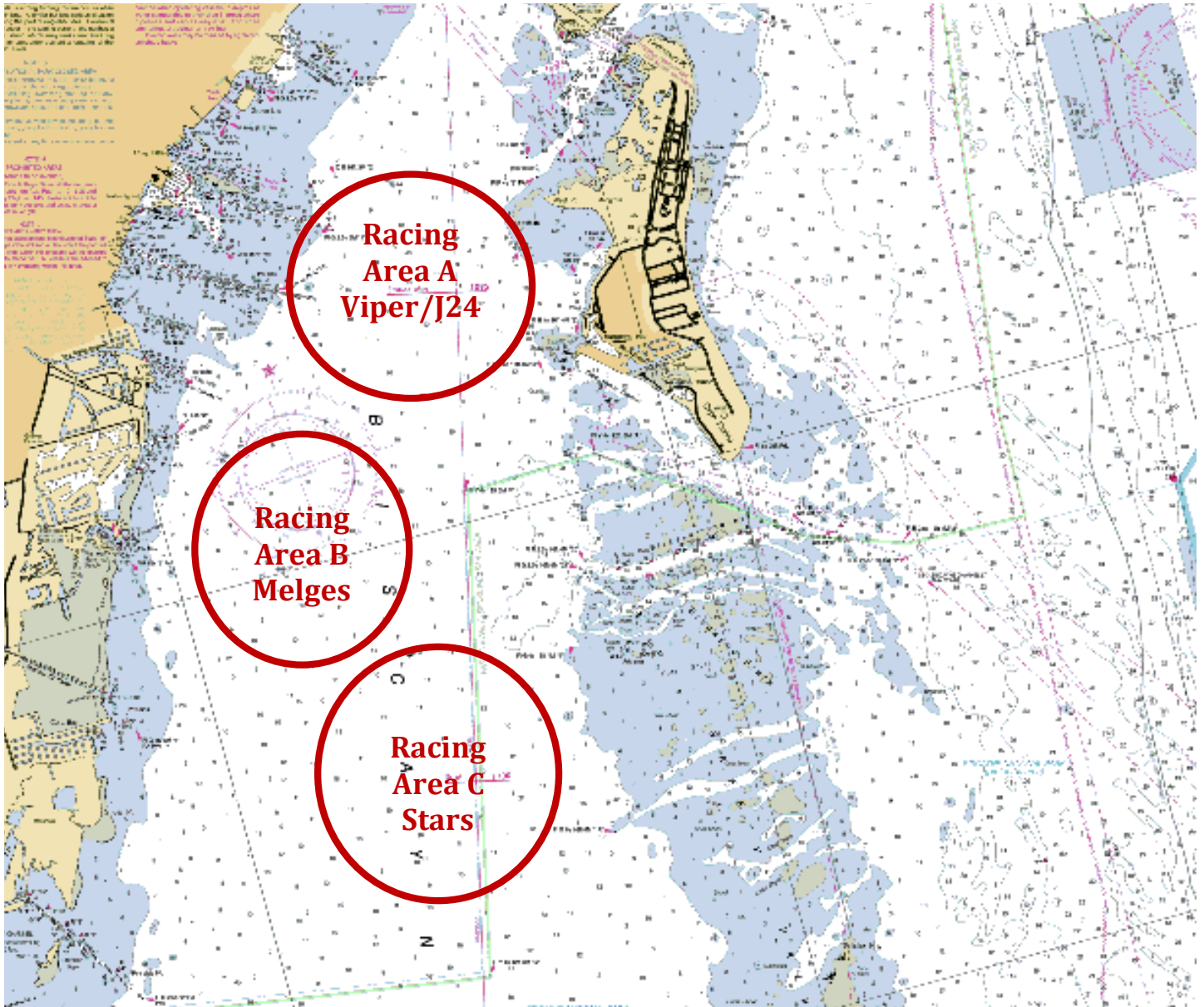
### 21 RADIO EQUIPMENT

A boat shall neither make radio or other data transmissions while racing nor receive radio or mobile phone communication not available to all boats except for emergencies. This restriction also applies to mobile telephones.



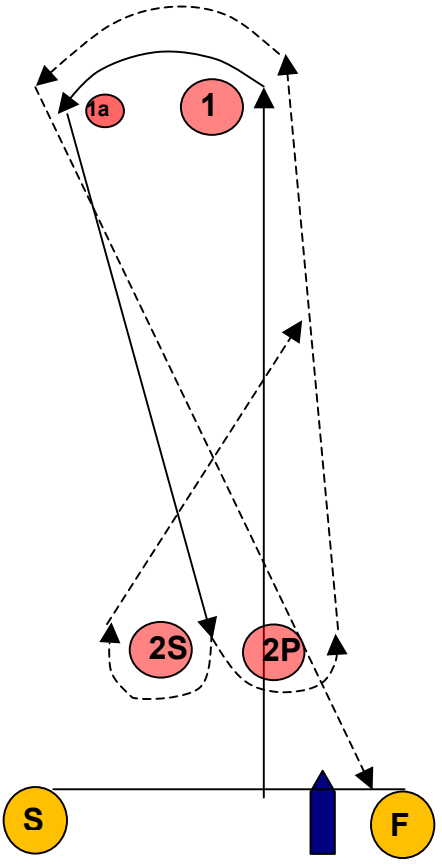
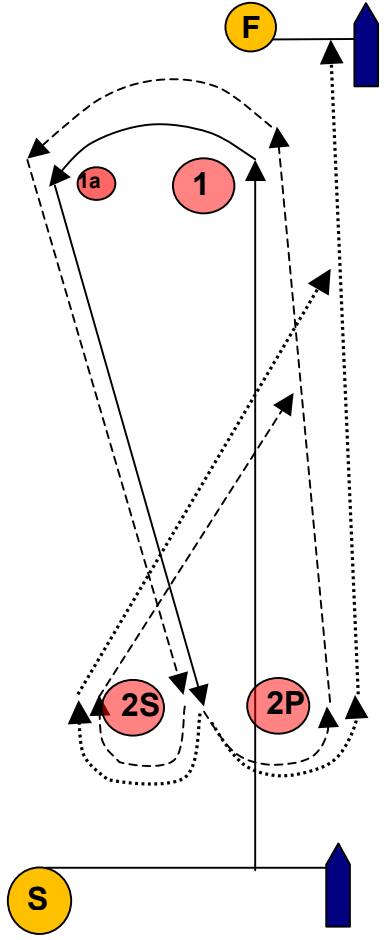


## Attachment I – Approximate Racing Areas





ATTACHMENT II: COURSE DIAGRAMS

Course 4		Course 5
		
<p>Start, 1 (port), 1a (port), between 2S and 2P, 1(port), 1a (port), finish</p>		<p>Start, 1 (port), 1a (port), between 2S and 2P, 1(port), 1a (port), between 2S and 2P, finish</p>